



(19) **United States**

(12) **Patent Application Publication**
Lee

(10) **Pub. No.: US 2010/0117939 A1**

(43) **Pub. Date: May 13, 2010**

(54) **ORGANIC LIGHT EMITTING DISPLAY DEVICE**

Publication Classification

(51) **Int. Cl.**
G09G 3/30 (2006.01)

(52) **U.S. Cl.** 345/76

(57) **ABSTRACT**

An organic light emitting display device includes a display unit including a plurality of data lines, a plurality of scan lines, and pixels at crossing regions of the data lines and scan lines, wherein the plurality of data lines are arranged into a plurality of groups; a data driver for supplying data signals to the data lines; a first demultiplexer at a first side of the display unit for associating the groups to first corresponding output channels of the data driver, and for coupling the output channels to the data lines in the first corresponding groups in accordance with control signals; a second demultiplexer at a second side of the display unit opposite the first side for associating the groups to second corresponding output channels of the data driver, and for coupling the output channels to the data lines in the second corresponding groups in accordance with the control signals.

(76) Inventor: **An-Su Lee, Yongin-city (KR)**

Correspondence Address:
CHRISTIE, PARKER & HALE, LLP
PO BOX 7068
PASADENA, CA 91109-7068 (US)

(21) Appl. No.: **12/607,045**

(22) Filed: **Oct. 27, 2009**

(30) **Foreign Application Priority Data**

Nov. 7, 2008 (KR) 10-2008-0110315

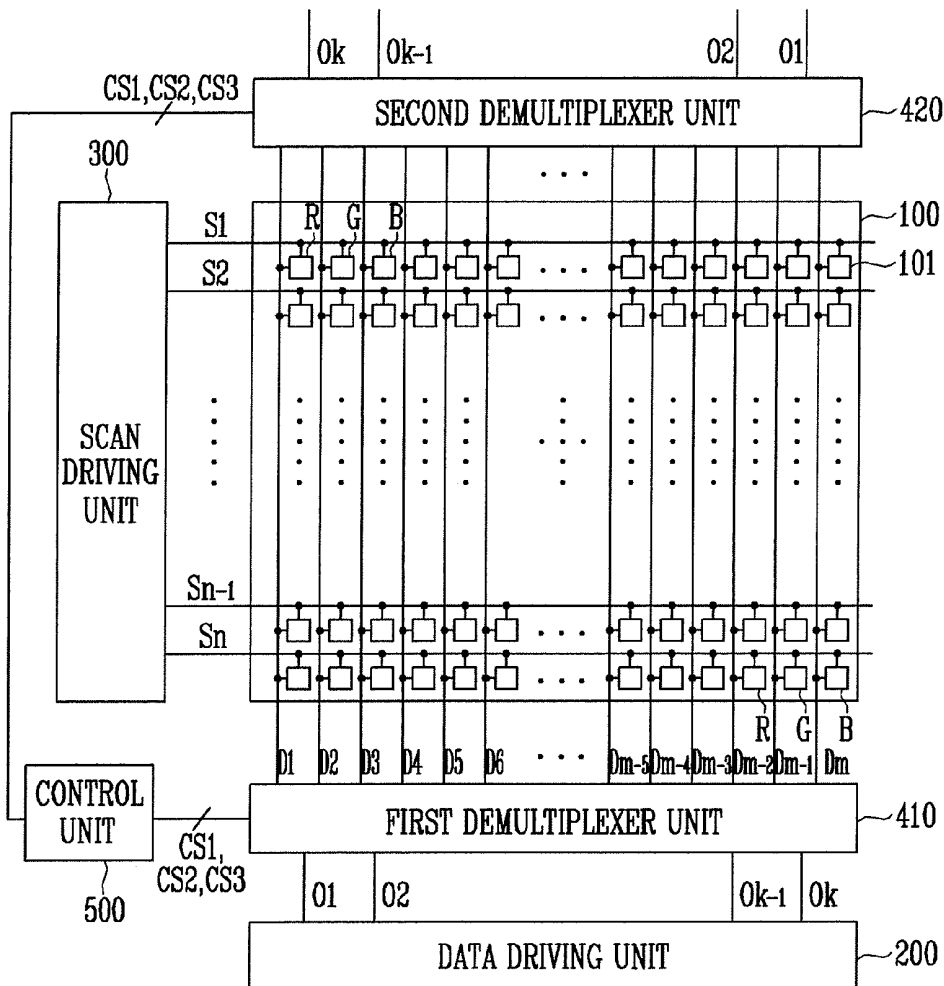


FIG. 1

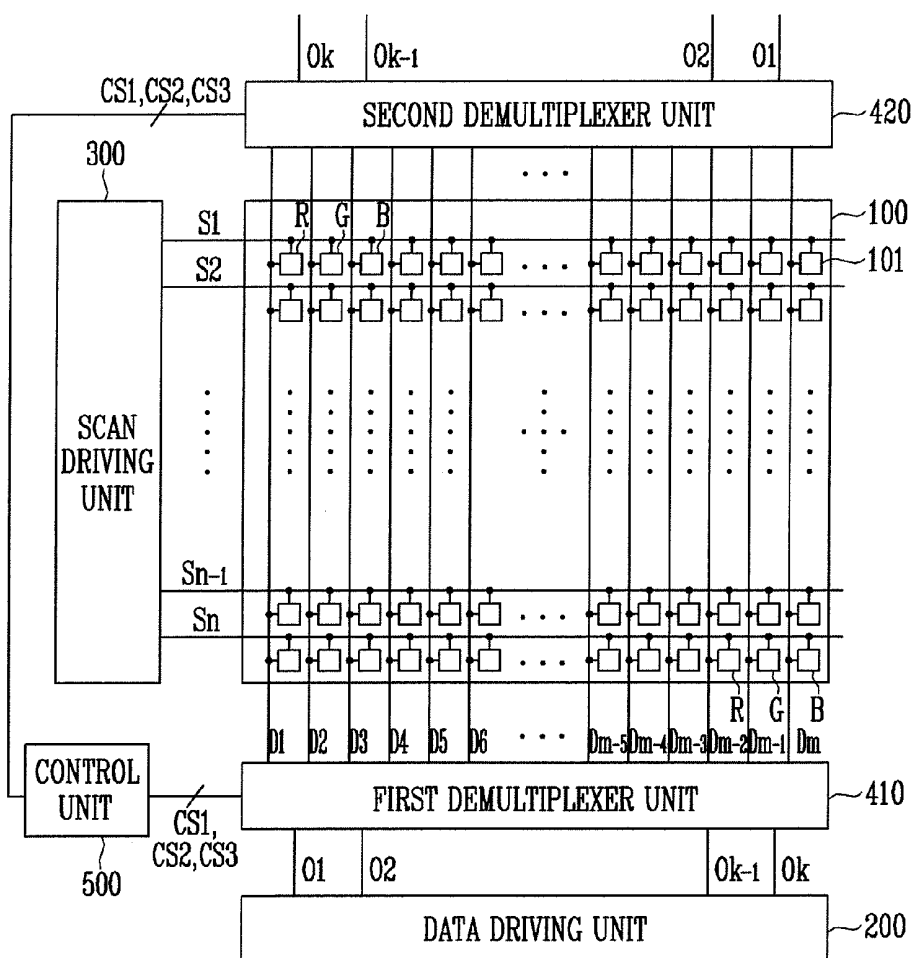


FIG. 2

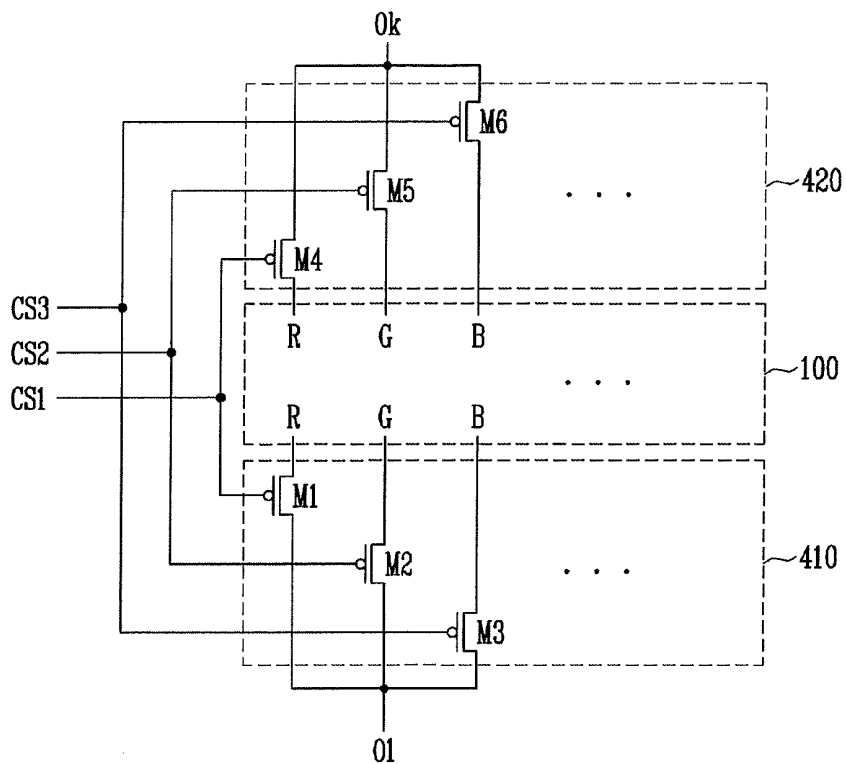


FIG. 3

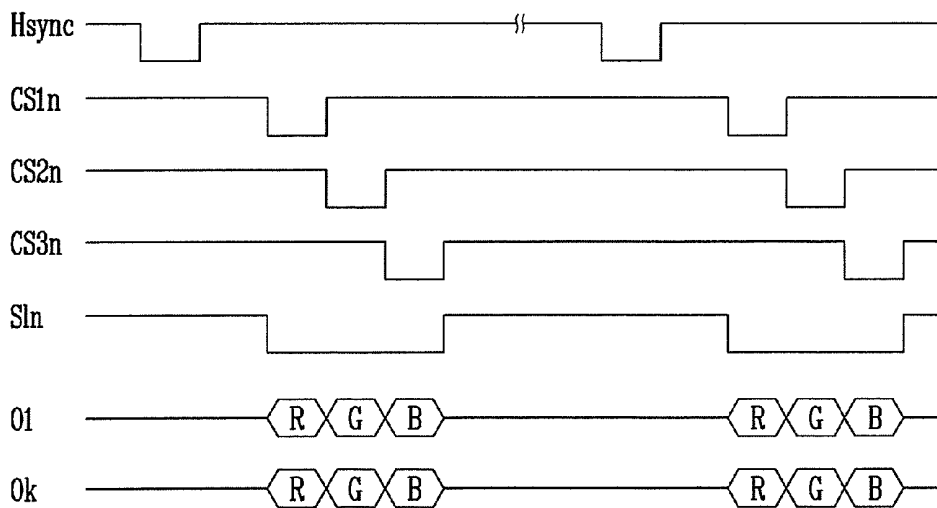


FIG. 4

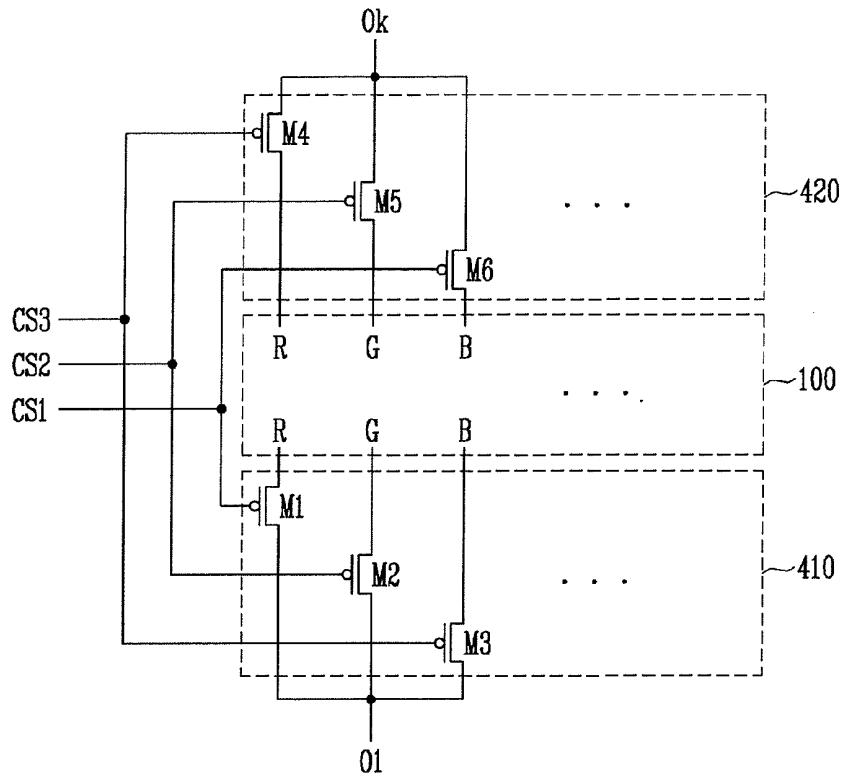
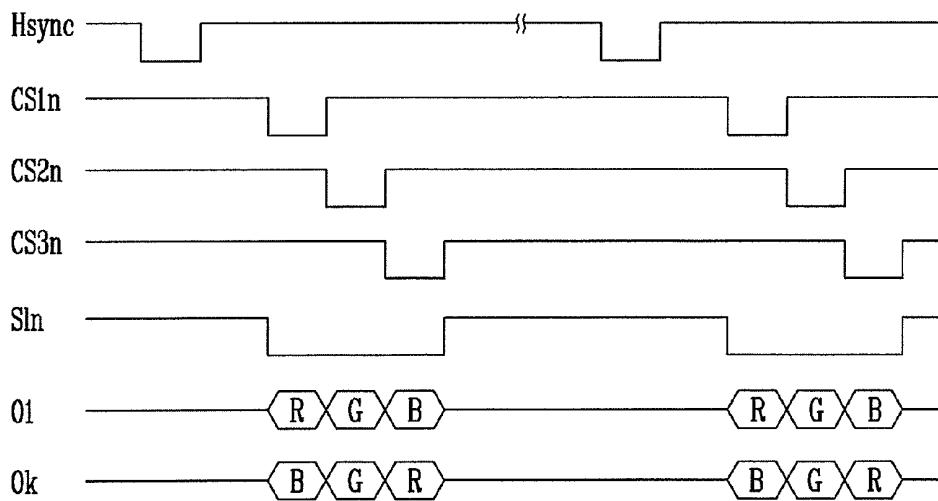


FIG. 5



ORGANIC LIGHT EMITTING DISPLAY DEVICE

CROSS-REFERENCE TO RELATED APPLICATIONS

[0001] This application claims priority to and the benefit of Korean Patent Application No. 10-2008-0110315, filed on Nov. 7, 2008, in the Korean Intellectual Property Office, the entire content of which is incorporated herein by reference.

BACKGROUND OF THE INVENTION

[0002] 1. Field of the Invention

[0003] The present invention relates to an organic light emitting display device.

[0004] 2. Description of Related Art

[0005] Recently, various types of flat panel display devices have been developed which have reduced weight and volume as compared to cathode ray tubes. The flat panel display devices include liquid crystal display devices, field emission display devices, plasma display devices, organic light emitting display devices, and others.

[0006] Among the flat panel display devices, organic light emitting display devices have excellent color reproducibility, slimness, and other advantages. Accordingly, it is widely used in a variety of applications such as PDAs and MP3 players, in addition to mobile phones.

[0007] An organic light emitting display device displays images using organic light emitting diodes (OLEDs) in which luminance is determined corresponding to an amount of current input to the OLEDs.

[0008] An organic light emitting diode includes an anode electrode, a cathode electrode, and a red, green or blue light emitting layer interposed between the anode and cathode electrodes. In the organic light emitting diode, luminance of light is determined depending on an amount of current flowing between the anode and cathode electrodes.

[0009] Red, green and blue light emitting layers are formed of different materials. Thus, although the same amount of current is applied to the red, green and blue light emitting layers, their light emitting efficiencies are different. Therefore, separate gammas are applied to the red, green and blue light emitting layers.

[0010] In a conventional organic light emitting display device, a data driver is generally positioned at a side of a panel, i.e., along an upper or lower portion of the panel. Here, the data driver applies data signals to respective pixels provided in the panel. When the data driver is positioned at a lower portion of the panel, it is assumed that the data driver has 33 pins, and the 33 pins are sequentially numbered from left to right. Then, red, green and blue data are repeatedly output sequentially from a first pin to a thirty-third pin. When the data driver is positioned at an upper portion of the panel, the order of pin numbers is changed, and red, green and blue data are repeatedly output sequentially from the thirty-third pin to the first pin.

[0011] At this time, separate gammas are applied to the respective pins. When the data driving unit is positioned at the lower portion of the panel, a red gamma is applied to a first pin, a fourth pin, a seventh pin, . . . , a green gamma is applied to a second pin, a fifth pin, an eighth pin, . . . , and a blue gamma is applied to a third pin, a sixth pin, a ninth pin, That is, gammas suitable for the respective colors are applied to data output through respective lines.

[0012] However, when the same data driver is positioned at an upper portion of the panel, the order of the pin numbers is changed. Therefore, colors of data do not correspond to the gammas. That is, the red gamma is applied to the first pin, the fourth pin, the seventh pin, . . . , the green gamma is applied to the second pin, the fifth pin, the eighth pin, . . . , and the blue gamma is applied to the third pin, the sixth pin, the ninth pin, However, blue data are output through the first pin, the fourth pin, the seventh pin, . . . , green data are output through the second pin, the fifth pin, the eighth pin, . . . , and red data are output through the third pin, the sixth pin, the ninth pin, Therefore, when this data driver is positioned at the upper portion of the panel, luminance and/or white balance is compromised. Accordingly, the data driver is designed differently depending on positions of the panel in which the data driver is mounted. For this reason, manufacturing cost is increased.

SUMMARY OF THE INVENTION

[0013] Accordingly, exemplary embodiments of the present invention provide an organic light emitting display device which allows a position of a data driver mounted in the display device to be freely set.

[0014] An aspect according to an exemplary embodiment of the present invention provides an organic light emitting display device, including a display unit including a plurality of data lines, a plurality of scan lines, and pixels at crossing regions of the plurality of data lines and the plurality of scan lines, wherein the plurality of data lines are arranged into a plurality of groups; a data driver for supplying red, green and blue data signals to the plurality of data lines; a first demultiplexer at a first side of the display unit, the first demultiplexer for associating each of the groups to first corresponding output channels of the data driver, and for coupling the output channels to the data lines in the first corresponding groups in accordance with control signals; a second demultiplexer at a second side of the display unit opposite the first side, the second demultiplexer for associating each of the groups to second corresponding output channels of the data driver, and for coupling the output channels to the data lines in the second corresponding groups in accordance with the control signals; and a controller for outputting the control signals, wherein the data driver is at the first side and coupled to the first demultiplexer, or at the second side and coupled to the second demultiplexer.

[0015] The data driver may sequentially output red, green and blue data signals through the output channels during a horizontal period.

[0016] When the data driver configured to be at the first side and coupled to the first demultiplexer is positioned at the second side and coupled to the second demultiplexer, the data driver may sequentially output blue, green and red data signals through the output channels during a horizontal period.

[0017] The first demultiplexer may include first, second and third transistors, wherein the first transistor is coupled to a data line corresponding to a red pixel of the pixels from among the plurality of data lines, the second transistor is coupled to a data line corresponding to a green pixel of the pixels from among the plurality of data lines, and the third transistor is coupled to a data line corresponding to a blue pixel of the pixels from among the plurality of data lines. The second demultiplexer may include fourth, fifth and sixth transistors, wherein the fourth transistor is coupled to the data line corresponding to the red pixel, the fifth transistor is coupled to the data line corresponding to the green pixel, and the sixth

transistor is coupled to the data line corresponding to the blue pixel. The first and fourth transistors may concurrently turn on and off, the second and fifth transistors may concurrently turn on and off, and the third and sixth transistors may concurrently turn on and off.

[0018] The controller may be configured to determine an order in which the first and fourth transistors, the second and fifth transistors, and the third and sixth transistors turn on and off in accordance with a position of the data driver.

[0019] The first demultiplexer may include first, second and third transistors, wherein the first transistor is coupled to a data line corresponding to a red pixel of the pixels from among the plurality of data lines, the second transistor is coupled to a data line corresponding to a green pixel of the pixels from among the plurality of data lines, and the third transistor is coupled to a data line corresponding to a blue pixel of the pixels from among the plurality of data lines. The second demultiplexer may include fourth, fifth and sixth transistors, wherein the fourth transistor is coupled to the data line corresponding to the red pixel, the fifth transistor is coupled to the data line corresponding to the green pixel, and the sixth transistor is coupled to the data line corresponding to the blue pixel. The first and sixth transistors may concurrently turn on and off, the second and fifth transistors may concurrently turn on and off, and the third and fourth transistors may concurrently turn on and off.

[0020] The controller may be configured to determine an order in which the first and sixth transistors, the second and fifth transistors, and the third and fourth transistors turn on and off in accordance with a position of the data driver.

[0021] An aspect according to another exemplary embodiment of the present invention provides an organic light emitting display device, including: a display unit including a plurality of data lines, a plurality of scan lines, and pixels at crossing regions of the plurality of data lines and the plurality of scan lines; a controller for supplying control signals; a data driver for supplying data signals to the plurality of data lines; a first demultiplexer at a first side of the display unit and connected to the plurality of data lines, the first demultiplexer configured to couple the data driver to the plurality of data lines in accordance with the control signals; and a second demultiplexer at a second side of the display unit opposite the first side and connected to the plurality of data lines, the second demultiplexer configured to couple the data driver to the plurality of data lines in accordance with the control signals; wherein the data driver is connected to the first demultiplexer or the second demultiplexer, and wherein the controller controls the first demultiplexer or the second demultiplexer to sequentially supply the data signals from the data driver to the plurality of data lines in a correct order.

[0022] Accordingly, in an organic light emitting display device and a driving method thereof according to the present invention, a position at which the data driver is mounted in the display device can be freely set.

BRIEF DESCRIPTION OF THE DRAWINGS

[0023] The accompanying drawings illustrate exemplary embodiments of the present invention, and, together with the description, serve to explain the principles of the present invention.

[0024] FIG. 1 is a schematic block diagram showing the structure of an organic light emitting display device according to an embodiment of the present invention.

[0025] FIG. 2 shows a first embodiment of a connection of first and second demultiplexer units employed in the organic light emitting display device according to aspects of the present invention.

[0026] FIG. 3 is a timing diagram showing signals input to the organic light emitting display device of FIG. 2.

[0027] FIG. 4 shows a second embodiment of the connection of the first and second demultiplexer units employed in the organic light emitting display device according to aspects of the present invention.

[0028] FIG. 5 is a timing diagram showing signals input to the organic light emitting display device of FIG. 4.

DETAILED DESCRIPTION OF EXEMPLARY EMBODIMENTS

[0029] Hereinafter, certain exemplary embodiments according to the present invention will be described with reference to the accompanying drawings. Here, when a first element is described as being coupled to a second element, the first element may be directly coupled to the second element or may be indirectly coupled to the second element via one or more additional elements. Further, some of the elements that are not essential to the complete understanding of the invention are omitted for clarity. Also, like reference numerals refer to like elements throughout.

[0030] FIG. 1 is a schematic block diagram showing the structure of an organic light emitting display device according to an embodiment of the present invention.

[0031] Referring to FIG. 1, the organic light emitting display device includes a display unit **100**, a data driver **200**, a scan driver **300**, a first demultiplexer unit **410**, a second demultiplexer unit **420** and a controller **500**.

[0032] A plurality of pixels **101** are arranged in the display unit **100**, and each of the pixels **101** includes an organic light emitting diode (not shown). The display unit **100** includes n scan lines $S1, S2, \dots, S_{n-1}$ and S_n , and m data lines $D1, D2, \dots, D_{m-1}$ and D_m . Here, the n scan lines $S1, S2, \dots, S_{n-1}$ and S_n extend in a row direction and supply scan signals. The m data lines $D1, D2, \dots, D_{m-1}$ and D_m extend in a column direction and supply data signals.

[0033] The display unit **100** is driven by receiving first and second power sources. In the display unit **100**, current flows through the organic light emitting diodes by utilizing scan signals, data signals, light emission signals and the first and second power sources, so that the display unit **100** emits light to display images. The plurality of pixels includes red, green and blue sub-pixels, R, G and B.

[0034] The data driver **200** generates data signals using image signals (R, G and B data signals) having red, green and blue components. The data driver **200** applies data signals output through output channels $O1, O2, \dots, O_{k-1}$ and O_k to the display unit **100**. Here, the output channels $O1, O2, \dots, O_{k-1}$ and O_k are connected to the data lines $D1, D2, \dots, D_{m-1}$ and D_m of the display unit **100**. The data driver **200** sequentially outputs three data signals from each output channel. That is, red, green and blue data signals are sequentially output from each output channel of the data driver **200**, so that the number of output channels of the data driver **200** can be decreased.

[0035] The data driver **200** is positioned above or below the display unit **100**. When the data driver **200** is positioned below the display unit **100** as shown in FIG. 1, the data driver **200** is coupled to the display unit **100** through the first demultiplexer unit **410**. When the data driver **200** is positioned

above the display unit **100**, the data driver **200** is coupled to the display unit **100** through the second demultiplexer **420**.

[0036] In the embodiment of the present invention, the data driver **200** positioned below the display unit **100** will be described as an example.

[0037] The scan driver **300** generates scan signals. The scan driver **300** is connected to the scan lines S_1, S_2, \dots, S_{n-1} and S_n , and supplies a scan signal to specific rows of the display unit **100**. A data signal output from the data driver **200** is supplied to a pixel **101** receiving the scan signal, and a voltage corresponding to the data signal is applied to the pixel **101**.

[0038] Each of the first and second demultiplexer units includes a plurality of demultiplexers. The respective demultiplexers divide the plurality of data lines into a plurality of groups, and each of the groups is coupled to an output channel of the data driver **200** through a demultiplexer. In other words, an output channel of the data driver **200** is coupled to a demultiplexer so that the output channel is coupled to three data lines through the demultiplexer. Data signals of three different colors are output from the output channel, and each of the data signals is supplied to a corresponding data line by the demultiplexer.

[0039] Operations of the first and second demultiplexer units **410** and **420** will now be described. When red, green and blue data signals are output from an output channel of the data driver **200**, the first or second demultiplexer unit **410** or **420** time-divisionally controls a connection sequence between the plurality of data lines and the output channels in accordance with timing of the output data signals, so that the red, green and blue data signals output from the output channel are transmitted to data lines coupled to red, green and blue pixels, respectively. Therefore, although red, green and blue gammas are individually used, red data are provided only to red pixels, green data are provided only to green pixels, and blue data are provided only to blue pixels, depending on operation of the first or second demultiplexer **410** or **420**. Accordingly, luminance or white balance is not lost due to the mismatch of gammas.

[0040] The controller **500** controls the first and second demultiplexer units **410** and **420**. The controller **500** generates control signals depending on whether the data driver **200** is positioned above or below the display unit **100**. Accordingly, the controller **500** controls data signals output from the data driver **200** to be applied to data lines coupled to the pixels.

[0041] Hereinafter, a connection of the display unit **100**, the first and second demultiplexer units **410** and **420** and the data driver **200** will be described in detail.

[0042] Each of the plurality of pixels constituting the display unit **100** includes three sub-pixels, i.e., red, green and blue sub-pixels, R, G and B. The respective sub-pixels R, G and B are coupled to data lines and receive data signals through the data lines, respectively.

[0043] The respective pixels **101** have red, green and blue sub-pixels, R, G and B repeatedly positioned from left to right of the display unit **100**.

[0044] The data driver **200** is coupled to the display unit **100** in one of two configurations. In a first configuration, the output channels O_1, O_2, \dots, O_{k-1} and O_k of the data driver **200** sequentially output red, green and blue data signals. In a second configuration, the output channels O_1, O_2, \dots, O_{k-1} and O_k of the data driver **200** sequentially output blue, green and red data signals.

[0045] In the first configuration, the data driver **200** is positioned below the display unit **100**. In the second configuration, the data driver **200** is positioned above the display unit **100**. Here, since the data driver **200** is designed to be positioned above the pixel unit **100** in the second configuration, the order of the output channels numbered from left to right is reversed as compared to the first configuration.

[0046] In the first configuration, the output channels of the data driver **200** are arranged from left to right in the order of a first output channel, a second output channel, \dots , a $(k-1)$ -th output channel and a k -th output channel, O_1, O_2, \dots, O_{k-1} and O_k . In the display unit **100**, red, green and blue pixels are repeatedly positioned from left to right of the display unit **100**. Therefore, if red, green and blue data are sequentially output from an output channel, the first demultiplexer unit **410** allows the red, green and blue data to be respectively provided to red, green and blue pixels, R, G and B.

[0047] However, in the second configuration, the operation of the data driver **200** is reversed as compared to the first configuration. Therefore, the output channels of the data driver **200** are arranged from left to right directions in the order of a k -th output channel, a $(k-1)$ -th output channel, \dots , a second output channel and a first output channel, O_k, O_{k-1}, \dots, O_2 and O_1 . If red, green and blue data are sequentially output from an output channel, the second demultiplexer unit **420** allows the red, green and blue data to be respectively provided to red, green and blue pixels, R, G and B. Further, if blue, green and red data are sequentially output from an output channel, the second demultiplexer unit **420** allows the blue, green and red data to be respectively provided to blue, green and red pixels, B, G and R through control of the controller **500**.

[0048] That is, red, green and blue data output from an output channel are respectively provided to red, green and blue pixels R, G and B by an operation of either the first or second demultiplexer unit **410** or **420**, regardless of the position of the data driver **200**.

[0049] Therefore, red, green and blue gammas are correctly applied to the red, green and blue data regardless of the position of the data driver **200**. Accordingly, suitable gammas are respectively applied to data signals and pixels, so that white balance is not lost.

[0050] FIG. 2 shows a first embodiment of a connection of the first and second demultiplexer units employed in the organic light emitting display device according to aspects of the present invention. FIG. 3 is a timing diagram showing signals input to the organic light emitting display device of FIG. 2. The connection of the first and second demultiplexer units **410** and **420** will be described below with reference to FIGS. 2 and 3.

[0051] In the first embodiment, red, green and blue data are sequentially output from an output channel regardless of the position of the data driver **200**.

[0052] The first demultiplexer unit **410** is formed below the display unit **100** and includes first to third transistors, M_1, M_2 and M_3 .

[0053] A first electrode of the first transistor M_1 is coupled to an output channel O_1 through which data signals are output, and a second electrode of the first transistor M_1 is coupled to a data line coupled to a red pixel R. A gate electrode of the first transistor M_1 is coupled to a first control line CS_1 through which a first control signal CS_1n is supplied.

[0054] A first electrode of the second transistor M_2 is coupled to the output channel O_1 , and a second electrode of

the second transistor M2 is coupled to a data line coupled to a green pixel G. A gate electrode of the second transistor M2 is coupled to a second control line CS2 through which a second control signal CS2_n is supplied.

[0055] A first electrode of the third transistor M3 is the output channel O1, and a second electrode of the third transistor M3 is coupled to a data line coupled to a blue pixel B. A gate electrode of the third transistor M3 is coupled to a third control line CS3 through which a third control signal CS3_n is supplied.

[0056] The second demultiplexer unit 420 is formed above the display unit 100 and includes fourth to sixth transistors, M4, M5 and M6.

[0057] A first electrode of the fourth transistor M4 is coupled to an output channel Ok through which data signals are output, and a second electrode of the fourth transistor M4 is coupled to a data line coupled to a red pixel R. A gate electrode of the fourth transistor M4 is coupled to the first control line CS1 through which the first control signal CS1_n is supplied.

[0058] A first electrode of the fifth transistor M5 is coupled to the output channel Ok, and a second electrode of the fifth transistor M5 is coupled to a data line coupled to a green pixel G. A gate electrode of the fifth transistor M5 is coupled to the second control line CS2 through which the second control signal CS2_n is supplied.

[0059] A first electrode of the sixth transistor M6 is coupled to the output channel Ok, and a second electrode of the sixth transistor M6 is coupled to a data line coupled to a blue pixel B. A gate electrode of the sixth transistor M6 is coupled to the third control line CS3 through which the third control signal CS3_n is supplied.

[0060] The first and second electrodes of each of the transistors are source and drain electrodes. If the first electrode is a source electrode, the second electrode is a drain electrode. If the first electrode is a drain electrode, the second electrode is a source electrode.

[0061] Operations of the first and second demultiplexer unit 410 and 420 will now be described. The first, second and third control signals CS1_n, CS2_n and CS3_n sequentially become low states when a scan signal S_{in} maintains a low state, which occurs after a horizontal synchronization signal Hsync becomes a low state. After that, the first, second and third control signals CS1_n, CS2_n and CS3_n sequentially become low states again when a scan signal S_{in} again becomes a low state, after a subsequent horizontal synchronization signal Hsync becomes a low state. The data signals are divided into red, green and blue data signals, and each of the data signals is supplied while the corresponding one of the control signals maintains a low state.

[0062] First, when the first control signal CS1_n becomes a low state, the first and fourth transistors M1 and M4 are turned on. At this time, a red data signal is output to the output channels O1 and Ok of the data driver 200. If the data driver 200 is positioned below the display unit 100, the red data signal is provided to a red pixel R through a data line via the first transistor M1. If the data driver 200 is positioned above the display unit 100, the red data signal is provided to a red pixel R through a data line via the fourth transistor M4.

[0063] When the second control signal CS2_n becomes a low state, the second and fifth transistors M2 and M5 are turned on. At this time, a green data signal is output to the output channels O1 and Ok of the data driver 200. If the data driver 200 is positioned below the display unit 100, the green

data signal is provided to a green pixel G through a data line via the second transistor M2. If the data driver 200 is positioned above the display unit 100, the green data signal is provided to a green pixel G through a data line via the fifth transistor M5.

[0064] When the third control signal CS3_n becomes a low state, the third and sixth transistors M3 and M6 are turned on. At this time, a blue data signal is output to the output channels O1 and Ok of the data driver 200. If the data driver 200 is positioned below the display unit 100, the blue data signal is provided to a blue pixel G through a data line via the third transistor M3. If the data driver 200 is positioned above the display unit 100, the blue data signal is provided to a blue pixel G through a data line via the sixth transistor M6.

[0065] FIG. 4 shows a second embodiment of the connection of the first and second demultiplexer units employed in the organic light emitting display device according to aspects of the present invention. FIG. 5 is a timing diagram showing signals input to the organic light emitting display device of FIG. 4. The connection of the first and second demultiplexer units 410 and 420 will be described below with reference to FIGS. 4 and 5.

[0066] The order of red, green and blue data output from an output channel is reversed depending on whether the data driver 200 is positioned above or below the display unit 100.

[0067] The first demultiplexer unit 410 is formed below the display unit 100 and includes first to third transistors, M1, M2 and M3.

[0068] A first electrode of the first transistor M1 is coupled to an output channel O1 through which data signals are output, and a second electrode of the first transistor M1 is coupled to a data line coupled to a red pixel R. A gate electrode of the first transistor M1 is coupled to a first control line CS1 through which a first control signal CS1_n is supplied.

[0069] A first electrode of the second transistor M2 is coupled to the output channel O1, and a second electrode of the second transistor M2 is coupled to a data line coupled to a green pixel G. A gate electrode of the second transistor M2 is coupled to a second control line CS2 through which a second control signal CS2_n is supplied.

[0070] A first electrode of the third transistor M3 is coupled to the output channel O1, and a second electrode of the third transistor M3 is coupled to a data line coupled to a blue pixel B. A gate electrode of the third transistor M3 is coupled to a third control line CS3 through which a third control signal CS3_n is supplied.

[0071] The second demultiplexer unit 420 is formed above the display unit 100 and includes fourth to sixth transistors, M4, M5 and M6.

[0072] A first electrode of the fourth transistor M4 is coupled to an output channel Ok through which data signals are output, and a second electrode of the fourth transistor M4 is coupled to a data line coupled to a red pixel R. A gate electrode of the fourth transistor M4 is coupled to the third control line CS3 through which the third control signal CS3_n is supplied.

[0073] A first electrode of the fifth transistor M5 is coupled to the output channel Ok, and a second electrode of the fifth transistor M5 is coupled to a data line coupled to a green pixel G. A gate electrode of the fifth transistor M5 is coupled to the second control line CS2 through which the second control signal CS2_n is supplied.

[0074] A first electrode of the sixth transistor M6 is coupled to the output channel Ok, and a second electrode of the sixth

transistor M6 is coupled to a data line coupled to a blue pixel B. A gate electrode of the sixth transistor M6 is coupled to the first control line CS1 through which the first control signal CS1n is supplied.

[0075] Operations of the first and second demultiplexer unit 410 and 420 will now be described. The first, second and third control signals CS1n, CS2n and CS3n sequentially become low states when a scan signal Sn maintains a low state, which occurs after a horizontal synchronization signal Hsync becomes a low state. After that, the first, second and third control signals CS1n, CS2n and CS3n sequentially become low states again when a scan signal Sn again becomes a low state, after a subsequent horizontal synchronization signal Hsync becomes a low state. The data signals are divided into red, green and blue data signals, and each of the data signals is supplied while the corresponding one of the control signals maintains a low state.

[0076] First, when the first control signal CS1n becomes a low state, the first and sixth transistors M1 and M6 are turned on. At this time, if the data driver 200 is positioned below the display unit 100, a red data signal is output to the output channel O1 of the data driver 200. If the data driver 200 is positioned above the display unit 100, a blue data signal is output to the output channel Ok of the data driver 200. Therefore, if the data driver 200 is positioned below the display unit 100, the red data signal is provided to a red pixel R through a data line via the first transistor M1. If the data driver 200 is positioned above the display unit 100, the blue data is provided to a blue pixel B through a data line via the sixth transistor M6.

[0077] When the second control signal CS2n becomes a low state, the second and fifth transistors M2 and M5 are turned on. At this time, a green data signal is output to the output channels O1 and Ok of the data driver 200, regardless of the position of the data driver 200. If the data driver 200 is positioned below the display unit 100, the green data signal is provided to a green pixel G through a data line via the second transistor M2. If the data driver 200 is positioned above the display unit 100, the green data signal is provided to a green pixel G through a data line via the fifth transistor M5.

[0078] When the third control signal CS3n becomes a low state, the third and fourth transistors M3 and M4 are turned on. At this time, if the data driver 200 is positioned below the display unit 100, a blue data signal is output to the output channel O1 of the data driver 200. If the data driver 200 is positioned above the display unit 100, a red data signal is output to the output channel Ok of the data driver 200. Therefore, if the data driver 200 is positioned below the display unit 100, the blue data signal is provided to a blue pixel B through a data line via the third transistor M3. If the data driver 200 is positioned above the display unit 100, the red data signal is provided to a red pixel R through a data line via the fourth transistor M4.

[0079] While the present invention has been described in connection with certain exemplary embodiments, it is to be understood that the invention is not limited to the disclosed embodiments, but instead is intended to cover various modifications and equivalent arrangements included within the spirit and scope of the appended claims, and equivalents thereof.

1. An organic light emitting display device, comprising: a display unit comprising a plurality of data lines, a plurality of scan lines, and pixels at crossing regions of the

plurality of data lines and the plurality of scan lines, wherein the plurality of data lines are arranged into a plurality of groups;

a data driver for supplying red, green and blue data signals to the plurality of data lines;

a first demultiplexer at a first side of the display unit, the first demultiplexer for associating each of the groups to first corresponding output channels of the data driver, and for coupling the output channels to the data lines in the first corresponding groups in accordance with control signals;

a second demultiplexer at a second side of the display unit opposite the first side, the second demultiplexer for associating each of the groups to second corresponding output channels of the data driver, and for coupling the output channels to the data lines in the second corresponding groups in accordance with the control signals; and

a controller for outputting the control signals, wherein the data driver is at the first side and coupled to the first demultiplexer, or at the second side and coupled to the second demultiplexer.

2. The organic light emitting display device of claim 1, wherein the data driver sequentially outputs red, green and blue data signals through the output channels during a horizontal period.

3. The organic light emitting display device of claim 1, wherein when the data driver configured to be at the first side and coupled to the first demultiplexer is positioned at the second side and coupled to the second demultiplexer, the data driver sequentially outputs blue, green and red data signals through the output channels during a horizontal period.

4. The organic light emitting display device of claim 1, wherein:

the first demultiplexer comprises first, second and third transistors, wherein the first transistor is coupled to a data line corresponding to a red pixel of the pixels from among the plurality of data lines, the second transistor is coupled to a data line corresponding to a green pixel of the pixels from among the plurality of data lines, and the third transistor is coupled to a data line corresponding to a blue pixel of the pixels from among the plurality of data lines; and

the second demultiplexer comprises fourth, fifth and sixth transistors, wherein the fourth transistor is coupled to the data line corresponding to the red pixel, the fifth transistor is coupled to the data line corresponding to the green pixel, and the sixth transistor is coupled to the data line corresponding to the blue pixel; and

wherein the first and fourth transistors concurrently turn on and off, the second and fifth transistors concurrently turn on and off, and the third and sixth transistors concurrently turn on and off.

5. The organic light emitting display device of claim 4, wherein the controller is configured to determine an order in which the first and fourth transistors, the second and fifth transistors, and the third and sixth transistors turn on and off in accordance with a position of the data driver.

6. The organic light emitting display device of claim 1, wherein:

the first demultiplexer comprises first, second and third transistors, wherein the first transistor is coupled to a data line corresponding to a red pixel of the pixels from among the plurality of data lines, the second transistor is

coupled to a data line corresponding to a green pixel of the pixels from among the plurality of data lines, and the third transistor is coupled to a data line corresponding to a blue pixel of the pixels from among the plurality of data lines; and

the second demultiplexer comprises fourth, fifth and sixth transistors, wherein the fourth transistor is coupled to the data line corresponding to the red pixel, the fifth transistor is coupled to the data line corresponding to the green pixel, and the sixth transistor is coupled to the data line corresponding to the blue pixel; and

wherein the first and sixth transistors concurrently turn on and off, the second and fifth transistors concurrently turn on and off, and the third and fourth transistors concurrently turn on and off.

7. The organic light emitting display device of claim 6, wherein the controller is configured to determine an order in which the first and sixth transistors, the second and fifth transistors, and the third and fourth transistors turn on and off in accordance with a position of the data driver.

8. The organic light emitting display device of claim 1, wherein the first demultiplexer and the second demultiplexer are each configured to supply data signals to all of the plurality of data lines.

9. An organic light emitting display device, comprising:
a display unit comprising a plurality of data lines, a plurality of scan lines, and pixels at crossing regions of the plurality of data lines and the plurality of scan lines;
a controller for supplying control signals;
a data driver for supplying data signals to the plurality of data lines;

a first demultiplexer at a first side of the display unit and connected to the plurality of data lines, the first demultiplexer configured to couple the data driver to the plurality of data lines in accordance with the control signals; and

a second demultiplexer at a second side of the display unit opposite the first side and connected to the plurality of data lines, the second demultiplexer configured to couple the data driver to the plurality of data lines in accordance with the control signals;

wherein the data driver is connected to the first demultiplexer or the second demultiplexer,

wherein the controller controls the first demultiplexer or the second demultiplexer to sequentially supply the data signals from the data driver to the plurality of data lines in a correct order, and

wherein the data driver sequentially supplies red, green and blue data signals, and the first demultiplexer or the second demultiplexer is configured to supply the red data signals to a data line corresponding to a red pixel of the pixels from among the plurality of data lines, to supply the green data signals to a data line corresponding to a green pixel of the pixels from among the plurality of data lines, and to supply the blue data signals to a data line corresponding to a blue pixel of the pixels from among the plurality of data lines.

10. The organic light emitting display device of claim 9, wherein the first demultiplexer comprises a first transistor coupled to the data line corresponding to the red pixel, a second transistor coupled to the data line corresponding to the green pixel, and a third transistor coupled to the data line corresponding to the blue pixel; and wherein the second demultiplexer comprises a fourth transistor coupled to the data line corresponding to the red pixel, a fifth transistor coupled to the data line corresponding to the green pixel, and a sixth transistor coupled to the data line corresponding to the blue pixel.

11. The organic light emitting display device of claim 10, wherein gate electrodes of the first and fourth transistors are coupled together, gate electrodes of the second and fifth transistors are coupled together, and gate electrodes of the third and sixth transistors are coupled together, and wherein the control signals are supplied to the respective gate electrodes for controlling the corresponding transistors.

12. The organic light emitting display device of claim 10, wherein gate electrodes of the first and sixth transistors are coupled together, gate electrodes of the second and fifth transistors are coupled together, and gate electrodes of the third and fourth transistors are coupled together, and wherein the control signals are supplied to the respective gate electrodes for controlling the corresponding transistors.

13. The organic light emitting display device of claim 9, wherein the first demultiplexer and the second demultiplexer are each configured to supply data signals to all of the plurality of data lines.

* * * * *

专利名称(译)	有机发光显示装置		
公开(公告)号	US20100117939A1	公开(公告)日	2010-05-13
申请号	US12/607045	申请日	2009-10-27
[标]申请(专利权)人(译)	李苏AN		
申请(专利权)人(译)	李AN-SU		
当前申请(专利权)人(译)	李AN-SU		
[标]发明人	LEE AN SU		
发明人	LEE, AN-SU		
IPC分类号	G09G3/30		
CPC分类号	G09G3/3275 G09G2310/0297 G09G2300/0426		
优先权	1020080110315 2008-11-07 KR		
其他公开文献	US8373626		
外部链接	Espacenet USPTO		

摘要(译)

一种有机发光显示装置，包括显示单元，所述显示单元包括多条数据线，多条扫描线，以及在所述数据线和扫描线的交叉区域处的像素，其中所述多条数据线被布置为多个组；用于向数据线提供数据信号的数据驱动器；第一多路分解器，位于显示单元的第一侧，用于将组与数据驱动器的第一对应输出通道相关联，并根据控制信号将输出通道耦合到第一对应组中的数据线；第二多路复用器，位于显示单元的与第一侧相对的第二侧，用于将组与数据驱动器的第二对应输出通道相关联，并用于根据控制信号将输出通道耦合到第二对应组中的数据线。

